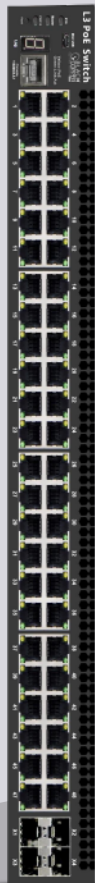
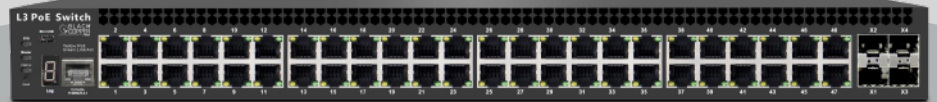


## **BC-POE48PG-F410G-370W**

### 10G Uplink 48-Port Gigabit L3 Managed PoE Switch

48X1000Mbps POE + 4X10G Mbps SFP + 2x console (1XRJ46 + 1Xmini USB) 370W



## Overview

BC-POE48PG-F410G-370W is a managed PoE switch specially designed for security transmission and WIFI coverage. It can meet the PoE power supply requirements of various types of devices such as WIFI AP, IP-camera, WIFI bridge and IP phone. The product adopts a new generation of high- performance hardware and software platform, provides flexible and cost- effective full-gigabit access and uplink ports, supports Layer 3 routing protocols, complete security protection mechanisms, complete ACL/QoS policies and rich VLAN functions. It is easy to manage and maintain, meets users' requirements for easy management, high security, and low cost of network equipment. It is suitable for campus, hotel, and enterprise park network access, aggregation and core multiple application scenarios.

# Features

## Port 6KV lightning protection

- All ports support 6KV lightning protection, PSE short circuit protection, PoE overload protection, power supply over temperature protection, over voltage protection, surge current protection and other protection features.

## Advanced hardware architecture design, powerful processing capability

- On the 1U rack switch, the high port density of 48 Gigabit +4 10 Gigabit switch with high-performance ARM A55 CPU to meet the application requirements of various complex scenarios and greatly improve the network data processing speed.

## Powerful business processing capabilities

Support 802.1Q VLAN, MAC VLAN, IP VLAN, users can flexibly divide VLAN as needed.

- Support QoS, 8 port queues, support port priority, 802.1P priority, DSCP priority, support SP, WRR, SP+WRR, WFQ priority scheduling algorithm.
- Support ACL, support L2 (Layer 2) ~ L4 (Layer 4) packet filtering function, provide flexible and secure access control policy.
- Support IGMP v1/v2/v3 Snooping, MLD v1/v2 Snooping to meet the requirements of multi-terminal HD video surveillance or video conference.
- Supports the fast leave mechanism and querier of Layer 2 multicast, supports Layer 2 IPv4 static multicast and Layer 2 IPv6 static multicast.
- Support RIP dynamic routing protocol, solve the routing problem after the small and medium-sized network is divided into subnets, and simplify the network configuration.
- Support static routing protocol, and manually configure routing entries to realize communication between different network segments.
- Support ARP configuration, so that hosts in different physical networks on the same network segment can communicate normally.

## Perfect security mechanism

- Complete security authentication mechanism: It supports IEEE 802.1x, Radius, Tacacs+, etc., and can provide users with a complete security authentication mechanism.
- The perfect loop detection mechanism can ensure the stable operation of the network for a long time.
- Provide port isolation in the same VLAN, and security features such as DHCP- Snooping, IP+MAC+port binding, etc., to further ensure user data security.
- Support ARP protection, IP source protection, DoS protection.
- Support to restrict user access based on port number, IP address and MAC address.

## Diverse reliability protection

- Support STP (IEEE 802.1d), RSTP (IEEE 802.1w) and MSTP (IEEE 802.1s) protocols to eliminate Layer 2 loops and implement link backup.
- Supports loop protection, root bridge protection, TC protection, BPDU protection, and BPDU filtering.
- Support 50ms switching of optical ports.

## Perfect POE power supply function

- Support 802.3af/at standard, built-in power supply, meet the needs of PoE scenarios such as security monitoring, wireless coverage and IP phone.
- Support PoE power limit and set PoE port priority. When the power exceeds the limit, the power will be given priority port.
- Support setting PoE power supply time period, users can control the timeperiod of PoE power supply according to their own needs.
- Support PoE chip status check, users can view the PoE chip temperature, output power and other parameters in real time through the web page.

# Features

## Flexible and convenient management and maintenance

- Supports various management methods such as Console, Telnet, and SSH.
- Support WEB network management (HTTP, HTTPS, SSL V3), which is simpler and more efficient, and is convenient for users to install and debug.
- Supports file upload and download management in TFTP mode.
- Support SNMP V1/V2/V3 to facilitate device management through the network management platform.
- Support one-stop management and maintenance of Fengrunda Apollo cloud platform, which can realize all-round remote operation and maintenance such as automatic device discovery, network topology management, and remote configuration management of devices.

# Specifications

Hardware Specifications	
Network Interface	<ul style="list-style-type: none"><li>• 48 10/100/1000Mbps RJ45 pory (POE)</li><li>• 4 10GSFP+ fiber port</li><li>• 1 Console port</li></ul>
Network protocol	<ul style="list-style-type: none"><li>• IEEE 802.3、IEEE 802.3i、IEEE 802.3u、IEEE 802.3ab、IEEE 802.3z、IEEE 802.3ad、IEEE 802.3x、IEEE 802.1p、IEEE 802.1q、IEEE 802.1d、IEEE 802.1s、IEEE 802.1w、IEEE 802.3af、IEEE 802.3at</li></ul>
Performance Specifications	<ul style="list-style-type: none"><li>• bandwidth: 176Gbps</li><li>• Packet forwarding rate: 130.9Mpps</li><li>• MAC addres: 16K</li><li>• port cache: 12Mb</li><li>• Forwarding mode: store and forward</li></ul>
LED indicator	<ul style="list-style-type: none"><li>• 52 Link/Act indicator</li><li>• 48 PoE indicator</li><li>• 1 Power indicator</li><li>• 1 SYS indicator</li></ul>
POE pin	<ul style="list-style-type: none"><li>• 1/2 (+) , 3/6 (-)</li></ul>
Power	<ul style="list-style-type: none"><li>• Input: AC 100-240V/50-60Hz</li><li>• Single port max power: 30W</li><li>• Total power: 360W</li></ul>
Dimensions (LxWxH)	<ul style="list-style-type: none"><li>• 440mm×320mm×44mm</li></ul>
Environmental Specifications	<ul style="list-style-type: none"><li>• Operating temperature: 0°C~40°C</li><li>• Storage temperature: -40°C~70°C</li><li>• Working humidity: 10%~ 90% RH non condensing</li><li>• Storage humidity: 5%~90% RH non condensing</li></ul>
Safety regulations	<ul style="list-style-type: none"><li>• CE/ROHS/FCC</li></ul>